

An aerial view of the Miami skyline, featuring numerous skyscrapers and a body of water, viewed through a black geometric grid overlay. The sky is a soft, hazy blue and orange, suggesting a sunrise or sunset. A white vertical bar is positioned in the upper center of the image.

P

PARAMOUNT

A WORLD OF LUXURY RESIDENCES AT

MIAMI WORLD CENTER

MIAMI

america's city of the future

1. London
2. New York
3. Singapore
4. Hong Kong
5. Geneva
6. Shanghai
7. Miami
8. Dubai
9. Beijing
10. Paris

The Knight Frank Global Cities Survey

keeps track of which cities are of most importance to the world's wealthiest people today.

It ranks cities based on four factors: Economic Activity, Quality of Life, Knowledge & Influence and Political Power, as well as taking into account the number of these wealthiest individuals who call each city home.

Knight Frank's The Wealth Report 2014: Global City Survey

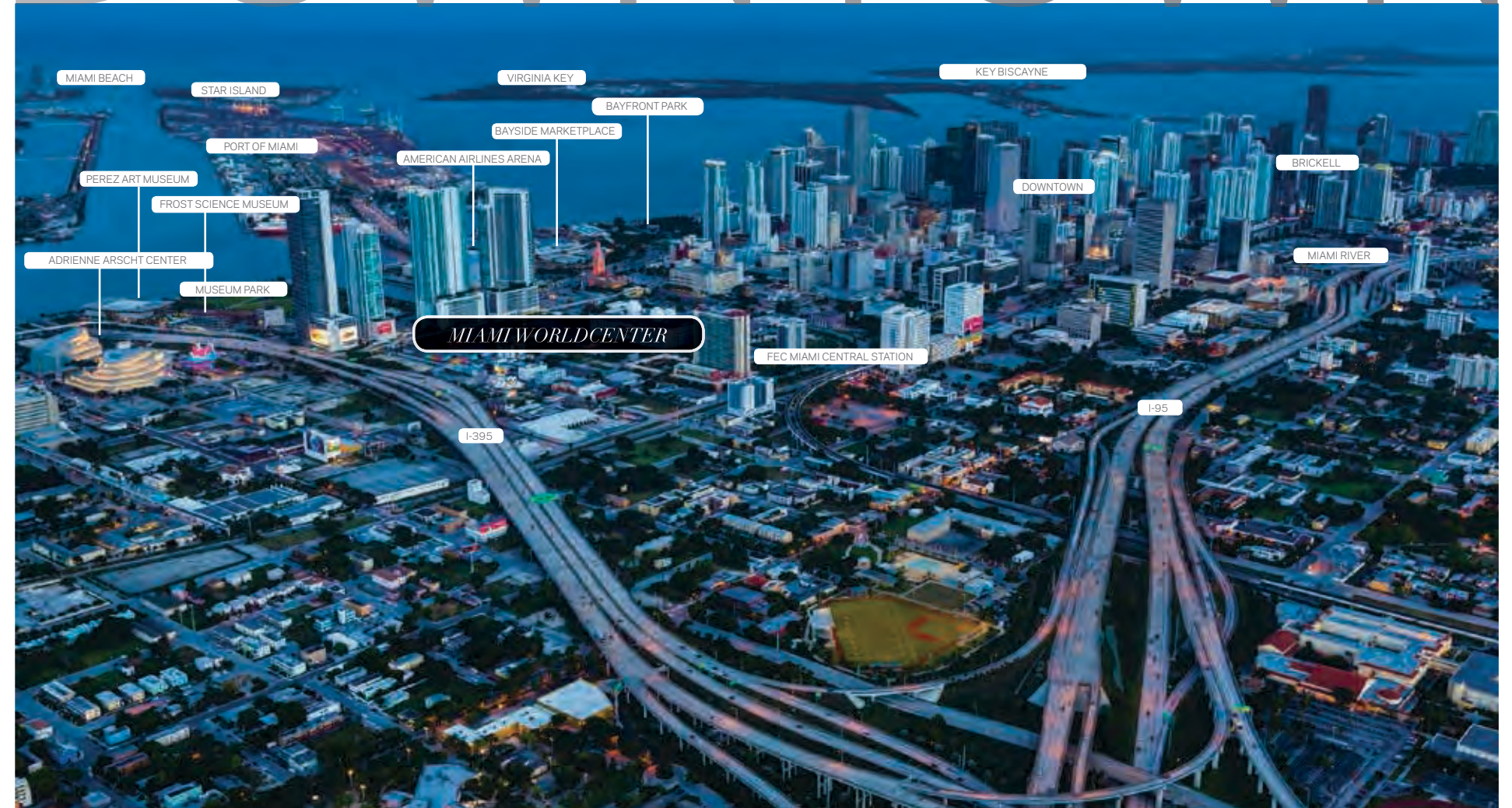
13.9 ^M VISITORS A YEAR	39 ^M FLY THRU MIA	4 ^M CRUISE FROM MIA	1000+ CORPORATE HEADQUARTERS	73 FOREIGN CONSULATES	21 FOREIGN TRADE OFFICES	32% [↑] FINANCE & INSURANCE INDUSTRY
---	------------------------------------	--------------------------------------	------------------------------------	-----------------------------	--------------------------------	--

A CITY WITHIN A CITY



ARTIST CONCEPTUAL RENDERING. DEVELOPER MAY CHANGE WITHOUT NOTICE.

DOWNTOWN



AN ELEVATOR RIDE AWAY



A MASTER PLANNED COMMUNITY

MIAMI WORLD CENTER



Miami Worldcenter,
2nd Largest Development in the U.S.
30 acres surrounded by over
\$3 billion of new public and private
projects including:

- mass transit
- museums
- parks
- sports venues
- entertainment

600,000 sq. ft. of convention space
The Mall at Miami Worldcenter anchored
by Bloomingdale's and Macy's.

&

A SIGNATURE RESIDENTIAL TOWER
Exclusive location and right to create the
premiere luxury residential experience at
Miami Worldcenter.

THE CITY'S NEWEST HOTSPOT



THE MALL AT MIAMI WORLD CENTER

The Forbes Company & Taubman Properties

750,000 sq. ft. mall
anchored by Bloomingdale's & Macy's

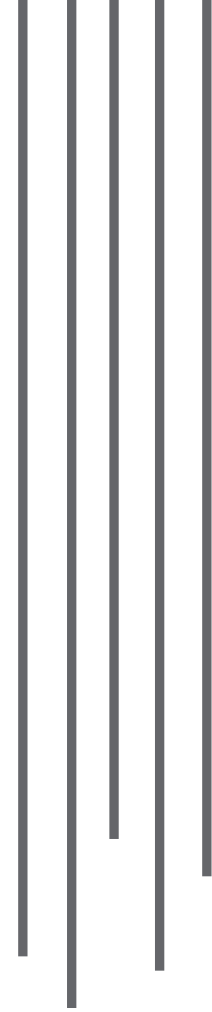


DESIGNED TO BE THE CENTERPIECE OF MIAMI'S URBAN LANDSCAPE



PARAMOUNT

A SIGNATURE RESIDENTIAL TOWER



PARAMOUNT Miami Worldcenter, will stand 700-feet above the phenomenon destined to be the new epicenter of Miami.

Featuring over 470 of the most luxurious and unique residences in Miami, PARAMOUNT will change urban living. Residents will thrive in the heart of the magic city, with every desire just an elevator ride away.



Features

- Each Residence includes:
- Private Elevator
- Private Foyer
- 10-Foot Ceilings
- Outdoor Living Rooms
- Full Laundry Room
- Convertible Den



URBAN LIVING REINVENTED



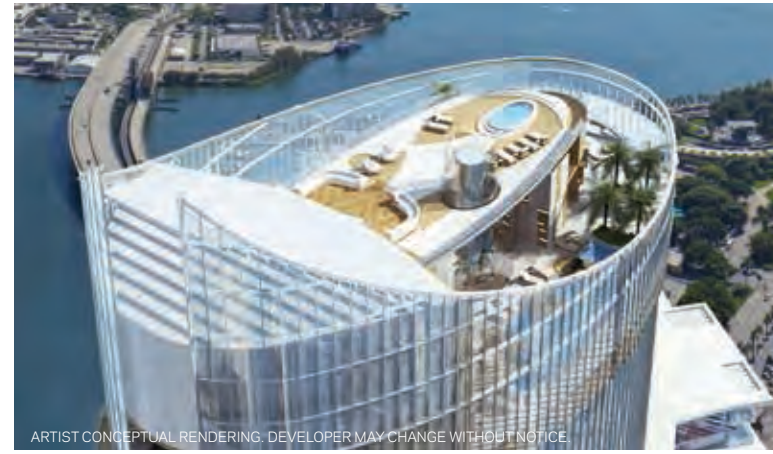
Outdoor Living Rooms



Amenities

SKYVIEW ROOFTOP DECK

- Skyview Lounge
- Sunrise Pool
- Firepit
- Infinity Pool
- Sundeck
- Yoga Deck



*Countless Possibilities
for the Ultimate
Lifestyle*

9TH FLOOR AMENITIES

- | | |
|-------------------|----------------------------------|
| Entertainment | Spa/Salon |
| Conservatory | Treatment Rooms |
| Recreation Lounge | Nail/Hair Bar |
| Outdoor Lounge | Outdoor Bath Gardens |
| Sports Center | Play Center |
| Fitness Center | Kids Play Room |
| Boxing Studio | Social Lounge (Pool Table, Etc.) |
| Aerobics Area | Jam Room with Recording Studio |



ROOFDECK AMENITIES

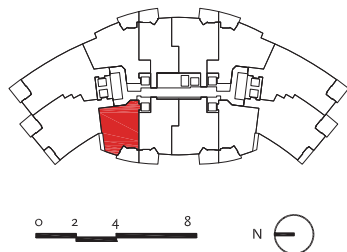
- Resort Pool
- Walking Paths
- Picnic/BBQ Areas
- Floating Lounge Pods
- Sports Center



1 Bedroom + Den Residences

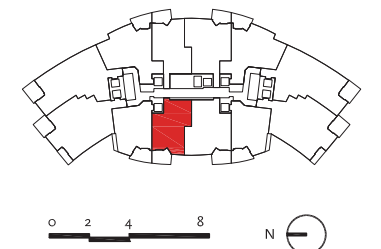
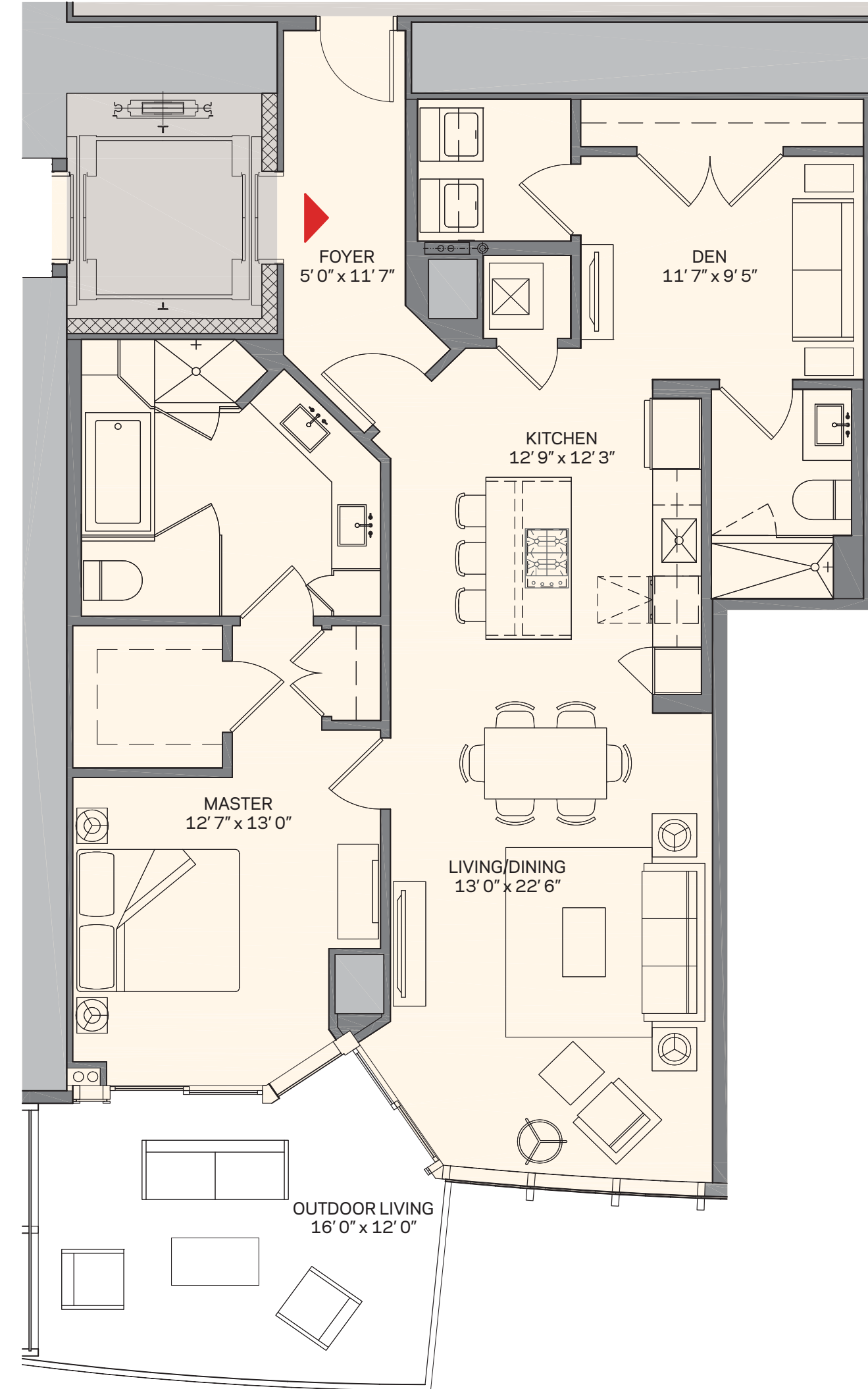
Residence A1

1 Bedroom + Den | 2 Bath
 Total: 1,491 sq. ft. | 138 m²
 Interior: 1,294 sq. ft. | 120 m²
 Outdoor: 197 sq. ft. | 18 m²



Residence B1

1 Bedroom + Den | 2 Bath
 Total: 1,521 sq. ft. | 141 m²
 Interior: 1,318 sq. ft. | 122 m²
 Outdoor: 205 sq. ft. | 19 m²



These drawings are conceptual only and are for the convenience of reference. They should not be relied upon as representations, express or implied, of the final detail of the residences. Units shown are examples of unit types and may not depict actual units. Stated square footages are ranges for a particular unit type and are measured to the exterior boundaries of the exterior walls and the centerline of interior demising walls and in fact vary from the area that would be determined by using the description and definition of the "Unit" set forth in the Declaration (which generally only includes the interior airspace between the perimeter walls and excludes interior structural components). Note that measurements of rooms set forth on this floor plan are generally taken at the greatest points of each given room (as if the room were a perfect rectangle, without regard for any cutouts). Accordingly, the area of the actual room will typically be smaller than the product obtained by multiplying the stated length times width. All dimensions are approximate and may vary with actual construction, and all floor plans and development plans are subject to change.

These drawings are conceptual only and are for the convenience of reference. They should not be relied upon as representations, express or implied, of the final detail of the residences. Units shown are examples of unit types and may not depict actual units. Stated square footages are ranges for a particular unit type and are measured to the exterior boundaries of the exterior walls and the centerline of interior demising walls and in fact vary from the area that would be determined by using the description and definition of the "Unit" set forth in the Declaration (which generally only includes the interior airspace between the perimeter walls and excludes interior structural components). Note that measurements of rooms set forth on this floor plan are generally taken at the greatest points of each given room (as if the room were a perfect rectangle, without regard for any cutouts). Accordingly, the area of the actual room will typically be smaller than the product obtained by multiplying the stated length times width. All dimensions are approximate and may vary with actual construction, and all floor plans and development plans are subject to change.

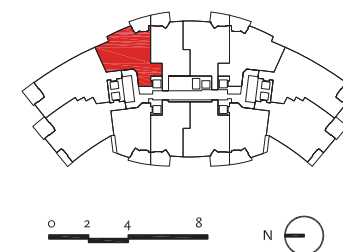
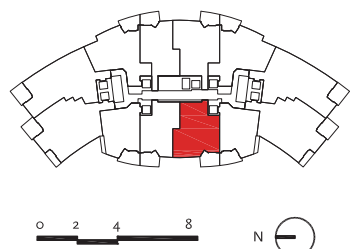
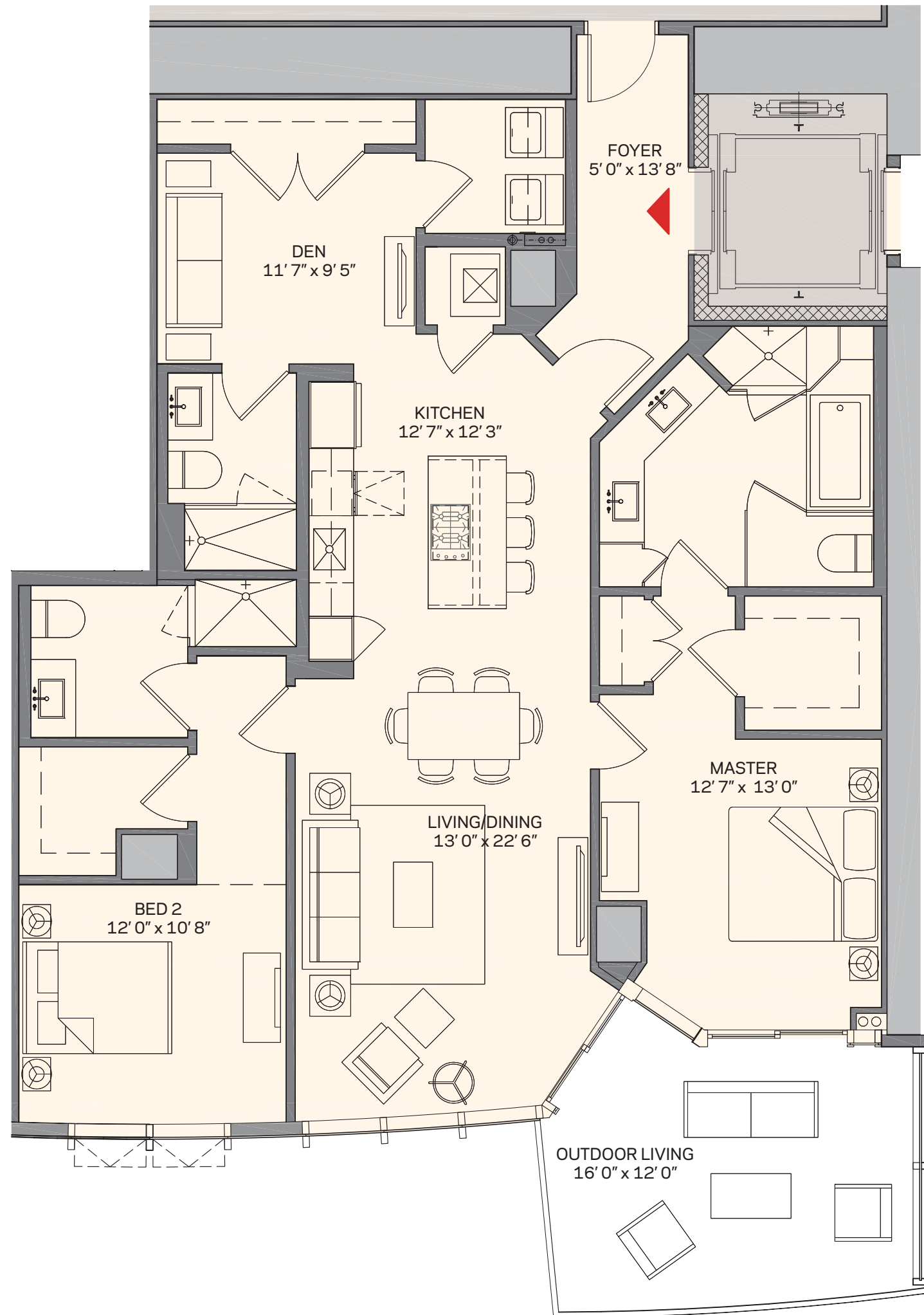
2 Bedroom + Den Residences

Residence C1

2 Bedroom + Den | 3 Bath
 Total: 1,835 sq. ft. | 170 m²
 Interior: 1,630 sq. ft. | 151 m²
 Outdoor: 205 sq. ft. | 19 m²

Residence D1

2 Bedroom + Den | 3 Bath
 Total: 1,952 sq. ft. | 181 m²
 Interior: 1,753 sq. ft. | 163 m²
 Outdoor: 199 sq. ft. | 18 m²



These drawings are conceptual only and are for the convenience of reference. They should not be relied upon as representations, express or implied, of the final detail of the residences. Units shown are examples of unit types and may not depict actual units. Stated square footages are ranges for a particular unit type and are measured to the exterior boundaries of the exterior walls and the centerline of interior demising walls and in fact vary from the area that would be determined by using the description and definition of the "Unit" set forth in the Declaration (which generally only includes the interior airspace between the perimeter walls and excludes interior structural components). Note that measurements of rooms set forth on this floor plan are generally taken at the greatest points of each given room (as if the room were a perfect rectangle), without regard for any cutouts. Accordingly, the area of the actual room will typically be smaller than the product obtained by multiplying the stated length times width. All dimensions are approximate and may vary with actual construction, and all floor plans and development plans are subject to change.

These drawings are conceptual only and are for the convenience of reference. They should not be relied upon as representations, express or implied, of the final detail of the residences. Units shown are examples of unit types and may not depict actual units. Stated square footages are ranges for a particular unit type and are measured to the exterior boundaries of the exterior walls and the centerline of interior demising walls and in fact vary from the area that would be determined by using the description and definition of the "Unit" set forth in the Declaration (which generally only includes the interior airspace between the perimeter walls and excludes interior structural components). Note that measurements of rooms set forth on this floor plan are generally taken at the greatest points of each given room (as if the room were a perfect rectangle), without regard for any cutouts. Accordingly, the area of the actual room will typically be smaller than the product obtained by multiplying the stated length times width. All dimensions are approximate and may vary with actual construction, and all floor plans and development plans are subject to change.

See Legal Disclaimers on Final Page

3 Bedroom + Den Residences

Residence E1

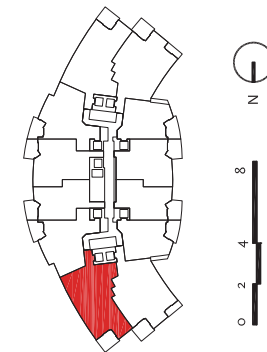
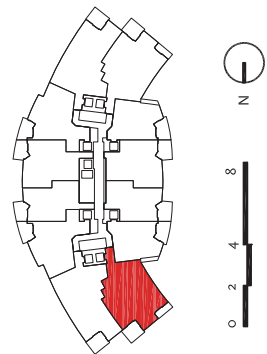
Residence F1

3 Bedroom + Den | 4 Bath

Total: 2,611 sq. ft. | 243 m²
 Interior: 2,320 sq. ft. | 216 m²
 Outdoor: 291 sq. ft. | 27 m²

3 Bedroom + Den | 4 Bath

Total: 2,578 sq. ft. | 240 m²
 Interior: 2,376 sq. ft. | 221 m²
 Outdoor: 202 sq. ft. | 19 m²



These drawings are conceptual only and are for the convenience of reference. They should not be relied upon as representations, express or implied, of the final detail of the residences. Units shown are examples of unit types and may not depict actual units. Stated square footages are ranges for a particular unit type and are measured to the exterior boundaries of the exterior walls and the centerline of interior demising walls and in fact vary from the area that would be determined by using the description and definition of the "Unit" set forth in the Declaration (which generally only includes the interior airspace between the perimeter walls and excludes interior structural components). Note that measurements of rooms set forth on this floor plan are generally taken at the greatest points of each given room (as if the room were a perfect rectangle), without regard for any cutouts. Accordingly, the area of the actual room will typically be smaller than the product obtained by multiplying the stated length times width. All dimensions are approximate and may vary with actual construction, and all floor plans and development plans are subject to change.

These drawings are conceptual only and are for the convenience of reference. They should not be relied upon as representations, express or implied, of the final detail of the residences. Units shown are examples of unit types and may not depict actual units. Stated square footages are ranges for a particular unit type and are measured to the exterior boundaries of the exterior walls and the centerline of interior demising walls and in fact vary from the area that would be determined by using the description and definition of the "Unit" set forth in the Declaration (which generally only includes the interior airspace between the perimeter walls and excludes interior structural components). Note that measurements of rooms set forth on this floor plan are generally taken at the greatest points of each given room (as if the room were a perfect rectangle), without regard for any cutouts. Accordingly, the area of the actual room will typically be smaller than the product obtained by multiplying the stated length times width. All dimensions are approximate and may vary with actual construction, and all floor plans and development plans are subject to change.

See Legal Disclaimers on Final Page